

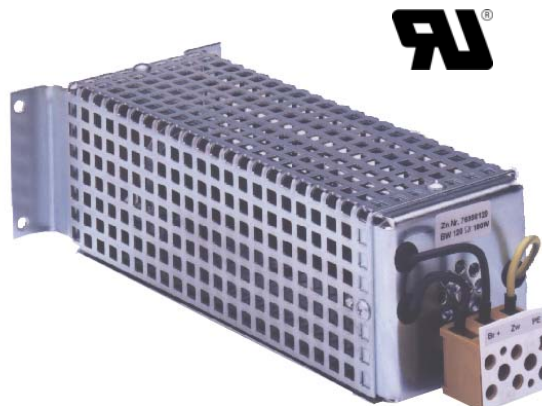
Braking Resistors For panel mounting

180 - 2000 W, DB / 1.8 – 20 kW, KB

Series BW 100
Type BW 101/....

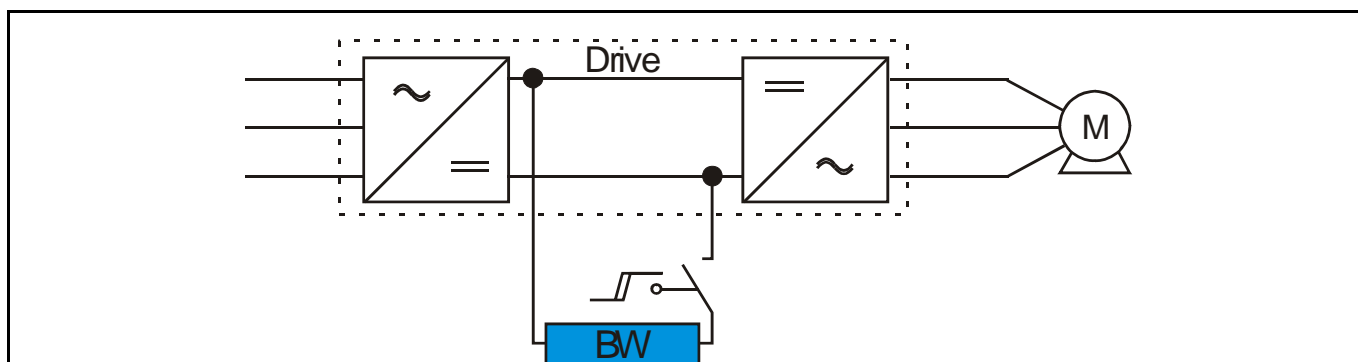
Applications:

For drives with frequency converters.
Multi drive technology for panel mounting.



Protection IP 20	Test voltage 2.5 kV
Max. temperature 300 °C	Ambient temperature -10...40°C

Circuit example



Benefits:

- Thermal overload switch option
- Decelerating a load with large inertia
- Increase the control torque of the inverter
- Compact construction
- Easy installation
- Zinc coated enclosure with perforated plate cover
- UL Recognized
- CE Mark
- Suitable for the use with any frequency drive
- Continuous power: Max. 20kw

Technical data

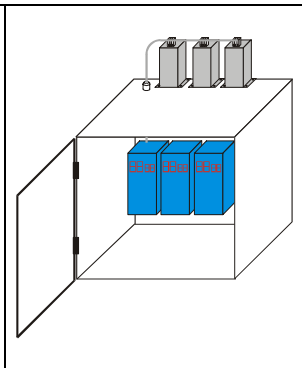
Type	BW 101/180/ R[Ω]	BW 101/360/ R[Ω]	BW 101/540/ R[Ω]	BW 101/1600/ R[Ω]	BW 101/2000/ R[Ω]
Resistance values [Ohm]	22 - 900	15 - 700	10 - 450	6.8 - 400	4.7 - 350
Continuous power [W]	180	360	540	1600	2000
Max. Operating voltage [V]	700	700	700	700	700

Resistance values conforming to E 6

Other power ratings on request

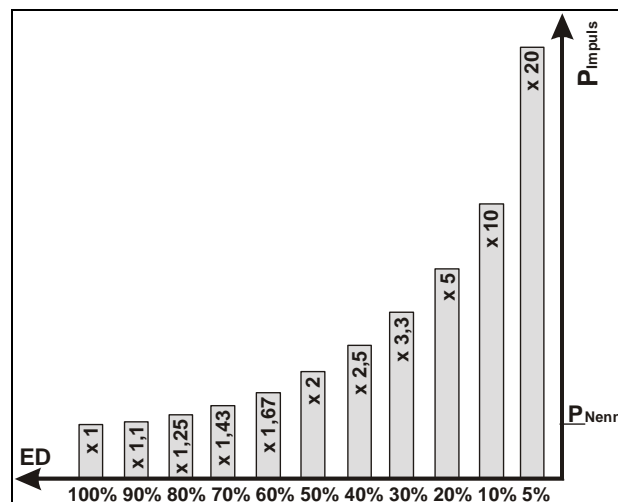
External assembly provides space savings in the cabinet.

A cabinet is very quickly heated because of the high power of braking resistors. Space can be saved and the temperature can be reduced when the resistors are mounted outside the cabinet, and the use of additional cooling fans can be avoided.

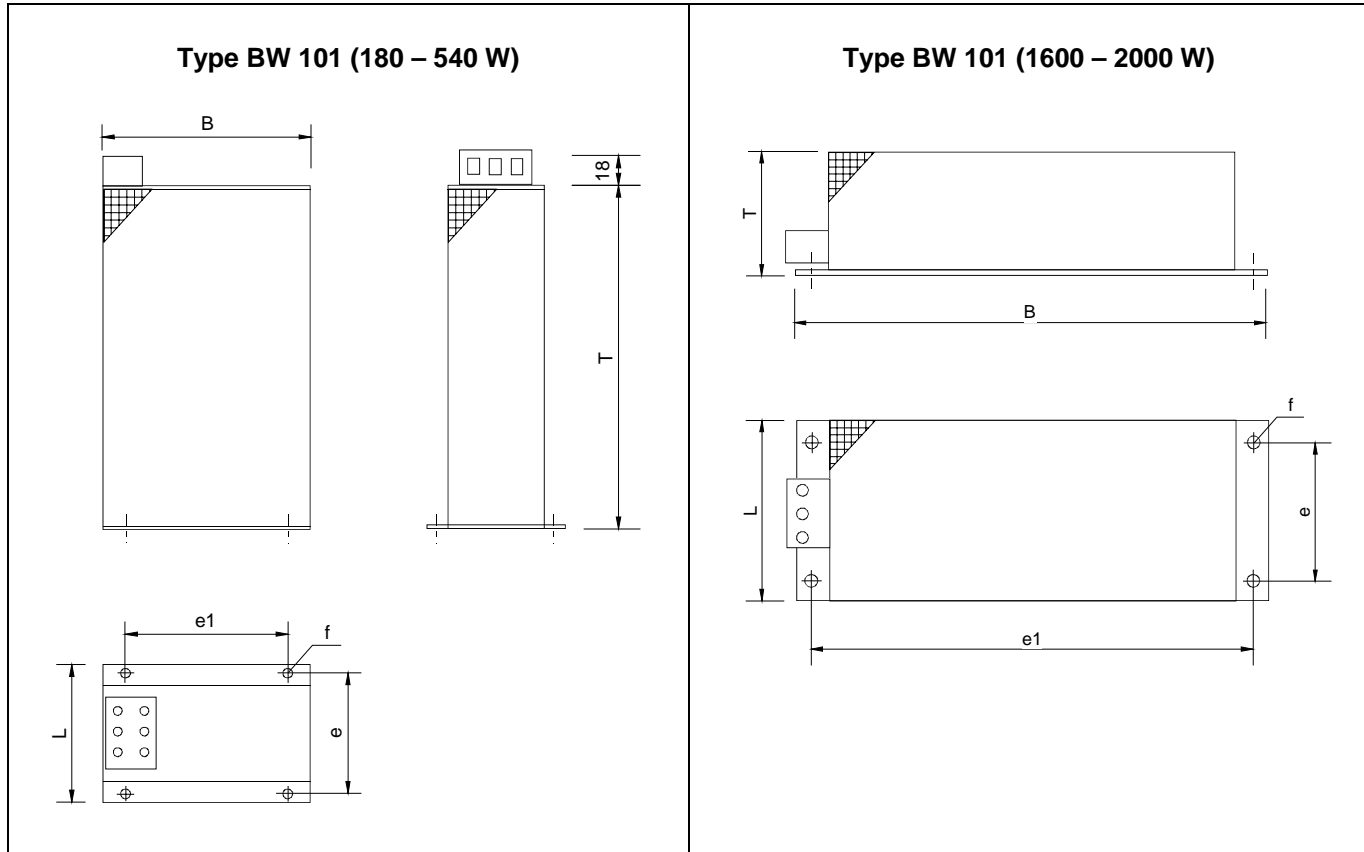


Load diagram

Cycle time 120 sec



Dimension Drawing



Type	T [mm]	L [mm]	B [mm]	e [mm]	e1 [mm]	f [mm]	Connection terminal
BW 101/180/ R[Ω]	220	100	65	90	45	4.5	3 x 4 mm ²
BW 101/360/ R[Ω]	220	100	170	90	150	4.5	3 x 4 mm ²
BW 101/540/ R[Ω]	220	100	170	90	150	4.5	3 x 4 mm ²
BW 101/1600/ R[Ω]	120	185	586	150	526	5.8	3 x 4 mm ²
BW 101/2000/ R[Ω]	120	275	486	240	426	5.8	3 x 4 mm ²