

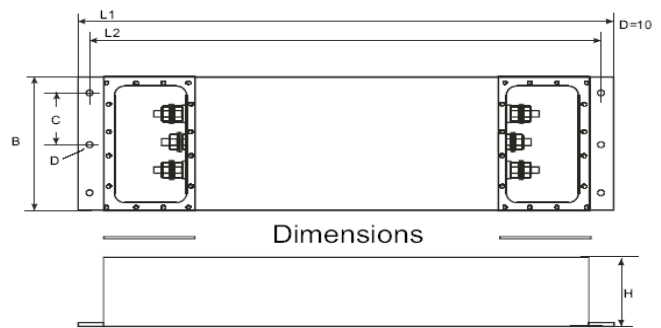
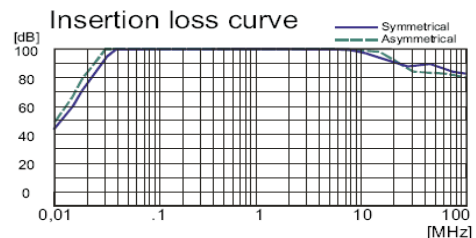
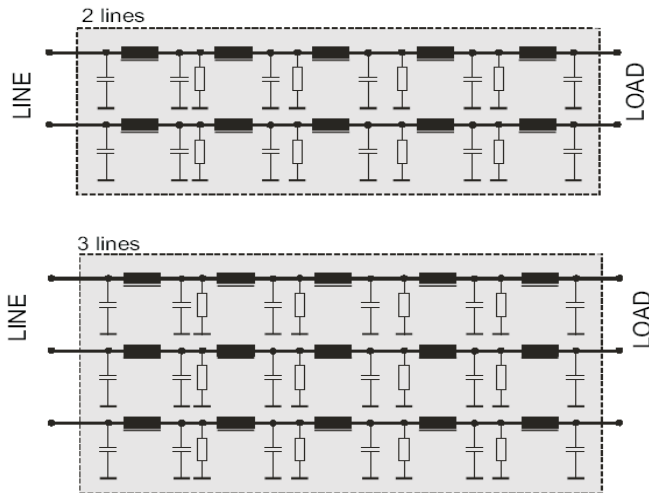
Multi-stage filter

Type CNW 140

Multi-stage filters are used in situations where a high level of attenuation is required. Measurement labs and screened rooms are two good examples where it is important to remove RFI from the incoming supply. These filters have a wide attenuation range of 14 kHz to 1 GHz. There are five stages which provide an insertion loss in excess of 100 dB over most of the frequency spectrum. Versions are available for 1, 2 or 3 line systems with voltage ratings of 230V or 400V.



Typical Circuits



Type	Voltage [V]	Current [A]	Dimensions						Terminals	
			L1 [mm]	L2 [mm]	B [mm]	D [mm]	H [mm]	C [mm]	Input	Output
CNW 141/60	1 x 230 V	1 x 60	940	915	229	10	127	102	M8	M8
CNW 141/100		1 x 100	940	915	229	10	127	102	M10	M10
CNW 141/150		1 x 150	1120	1090	355	10	152	155	M12	M12
CNW 141/250		1 x 250	1120	1090	355	10	152	155	M14	M14
CNW 141/400		1 x 400	1220	1190	355	10	152	155	M20	M20
CNW 142/30	2 x 230 V or 400 V	2 x 30	940	915	229	10	127	102	M8	M8
CNW 142/60		2 x 60	940	915	229	10	127	102	M8	M8
CNW 142/150		2 x 150	1120	1090	355	10	152	155	M12	M12
CNW 142/200		2 x 200	1120	1090	355	10	152	155	M14	M14
CNW 142/250		2 x 250	1220	1190	355	10	152	155	M14	M14
CNW 142/400	2 x 400	1220	1190	355	10	152	155	M20	M20	
CNW 143/16	3 x 230 V or 400 V	3 x 16	940	915	229	10	127	102	M6	M6
CNW 143/30		3 x 30	940	915	229	10	127	102	M8	M8
CNW 143/50		3 x 50	1120	1090	355	10	152	155	M8	M8
CNW 143/100		3 x 100	1120	1090	355	10	152	155	M12	M12
CNW 143/150		3 x 150	1220	1190	355	10	152	155	M12	M12
CNW 143/200	3 x 200	1220	1190	355	10	152	155	M20	M20	

Frequency: 50/60 Hz Earth Leakage Current: < 1/10 Rated Current

REO-USA, Inc.

3250 North Post Road, Suite #132
 Indianapolis, IN 46226
 USA
 Phone (317) 899-1395 Fax (317) 899-1396
 Web site www.reo-usa.com
 Email info@reo-usa.com

www.reo-usa.com

