

Three Phase dv/dt Filters

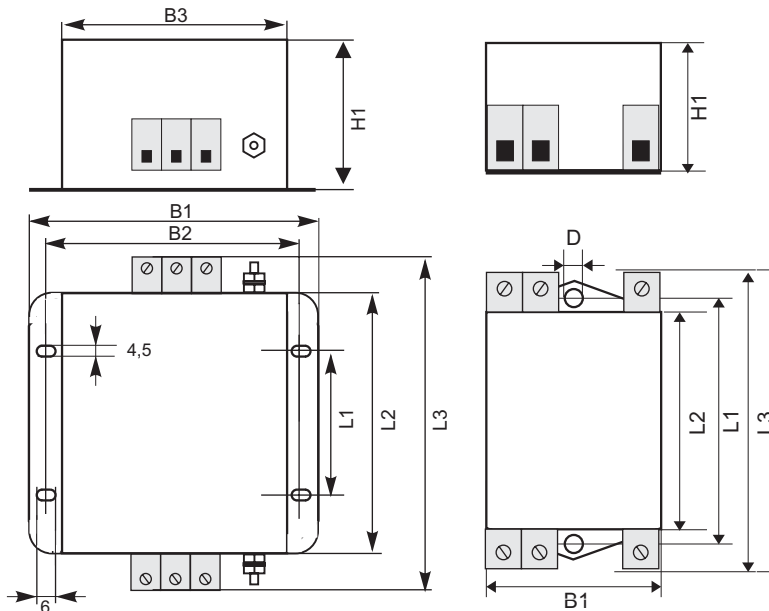
Type CNW 811 Series

Output filters used with fast switching semiconductors for reducing harmonics. Reduction of leakage current, suppression of interference and line noise between frequency drives and motors.

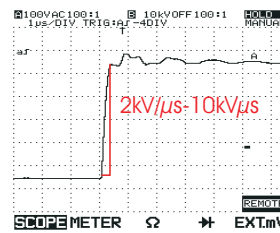
- Voltage : 3 x 500V, AC
- High inductance
- Reduced losses
- Easy to install
- Minimum stray fields
- Robust housing



Type	Current (A)	Inductance [mH]	DC Resistance R_{cu} [mΩ]	Dimensions									Connection
				B1	B2	B3	D	H1	L1	L2	L3		
CNW 811/6	3 x 6	7.5	50	50	-	-	5	40	75	65	85	2	
CNW 811/10	3 x 10	4.5	19	50	-	-	5	40	75	65	85	2	
CNW 811/16	3 x 16	4	12	105	95	84.5	4.5	57	51	100	120	2	
CNW 811/25	3 x 25	2.5	6.8	105	95	84.5	4.5	57	51	100	140	3	
CNW 811/36	3 x 36	1.8	3.5	105	95	84.5	4.5	65	51	100	140	3	
CNW 811/64	3 x 64	1.5	1.5	150	136	120	5.5	65	115	200	240	4	
CNW 811/85	3 x 85	1.2	1	150	136	120	5.5	65	115	200	240	5	
CNW 811/100	3 x 100	0.7	0.7	150	136	129	5.5	65	115	200	260	6	

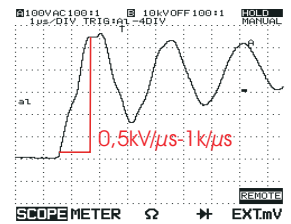


Without dv/dt filter

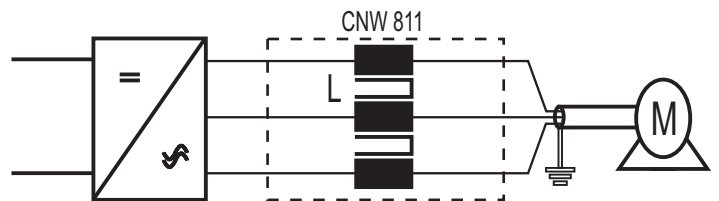


Voltage rise 2-10 kV/μs
Measurement with 100 m motor cable

With dv/dt filter



Voltage rise 0.5-1 kV/μs
Measurement with 100 m motor cable



REO-USA, Inc.

3250 North Post Road, Suite 132
Indianapolis, IN 46226
USA
Phone (317) 899-1395 Fax (317) 899-1396
Web site www.reo-usa.com
Email info@reo-usa.com

