

**Single-phase mains filters (2 connections)
High Attenuation (3 A - 20 A)**

**Series CNW 100
Type CNW 101**

Applications:

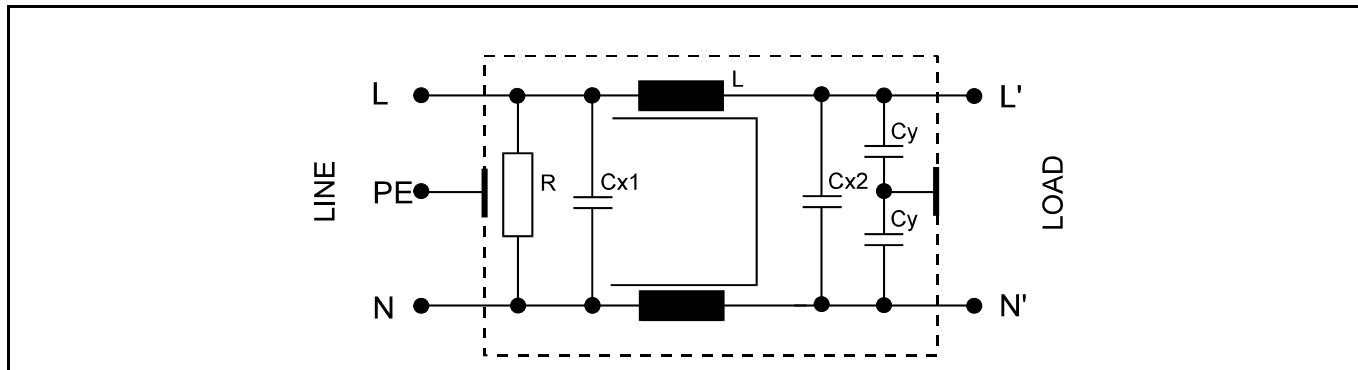
Controlled single phase drives with frequency inverter.

- **Packing machines**
- **Automatic production machines**
- **Cranes**
- **Pumping apparatus**



conforming to VDE 0565-3/ IEC 950/ UL 1283	Test voltage L-N 2100 V, DC 1 s L/N-PE 2700 V, DC 1s
Overload 1.5 x rated current 1 min / h	Climatic rating DIN IEC 68 Teil 1 25/085/21

Circuit example



Benefits:

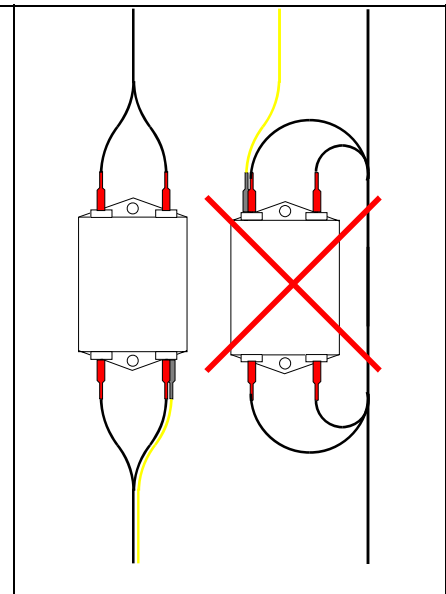
- | | | |
|--|--|--|
| <ul style="list-style-type: none"> • Compact design • Reduced weight • Easy installation • Reduced losses • Mechanical stress reduction | <ul style="list-style-type: none"> • Low heating • low noise • simple connection • Temperature reduction • Reduced harmonic distortions | <ul style="list-style-type: none"> • Improved power factor • Reduces tripping • Semiconductor life extended • CE Mark • UL Recognized |
|--|--|--|

Technical data

Type	Rated voltage [V]	Rated current	Leakage current	ΣC_x	ΣC_y	L	R
		[A]	[mA]	[μF]	[nF]	[mH]	[k Ω]
CNW 101/3	250	3	<3.5	0.94	20	3.3	680
CNW 101/6		6	<3.5	0.94	20	1.8	680
CNW 101/10		10	<3.5	0.94	20	1.8	680
CNW 101/16		16	<3.5	0.94	20	1.2	680
CNW 101/20		20	<3.5	0.94	20	1.0	680

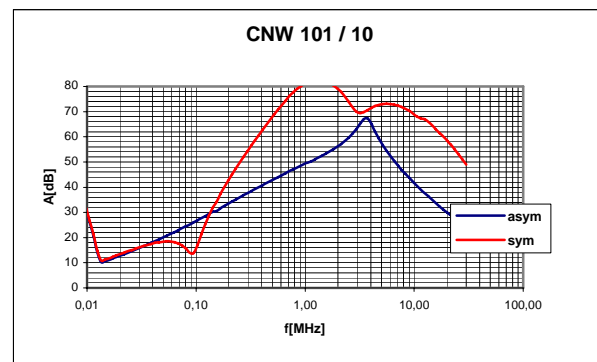
Frequency: 50/60 Hz

A single-phase, 250V, high performance filter suitable for most applications. Current ratings from 3A - 20A available. Provided with 6.3mm spade terminals and UL approved. Suitable for use in switch-mode power supplies for industrial applications, frequency drives and other types of electronic power supplies.



Example of Insertion loss

Other insertion losses on request

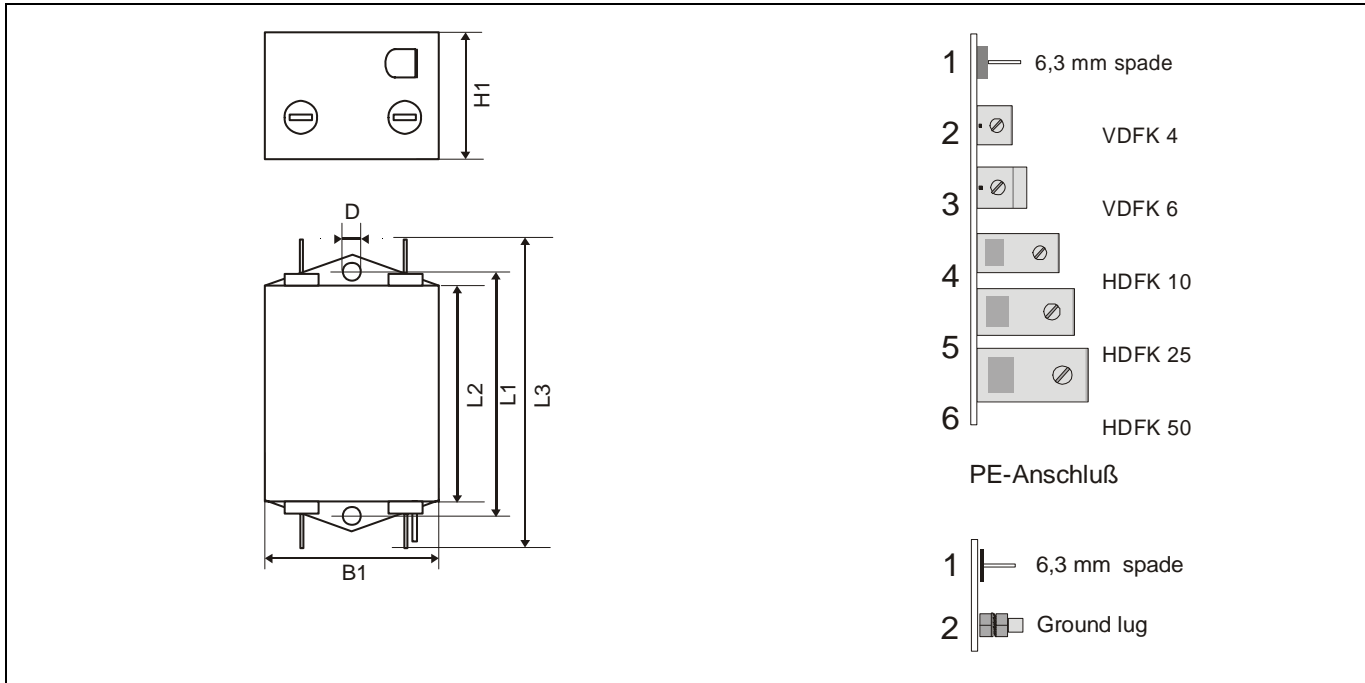


Per CISPR 17

Blue graph 50 Ω /50 Ω asym.

Red graph 50 Ω /50 Ω sym.

Dimension Drawing



Type	Casing	Connection	PE-Connection	Dimensions					
				B 1	D	H 1	L 1	L 2	L 3
				mm	mm	mm	mm	mm	mm
CNW 101/3	A	1	1	45	4	30	60	52	80
CNW 101/6	A	1	1	45	4	30	60	52	80
CNW 101/10	A	1	1	50	5	30	75	65	92
CNW 101/16	A	1	1	50	5	30	75	65	92
CNW 101/20	A	1	1	50	5	30	75	65	92