

**Single-phase mains filters (2 connections)  
Very High Attenuation (3 A - 20 A)**

**Series CNW 100  
Type CNW 102**

**Applications:**

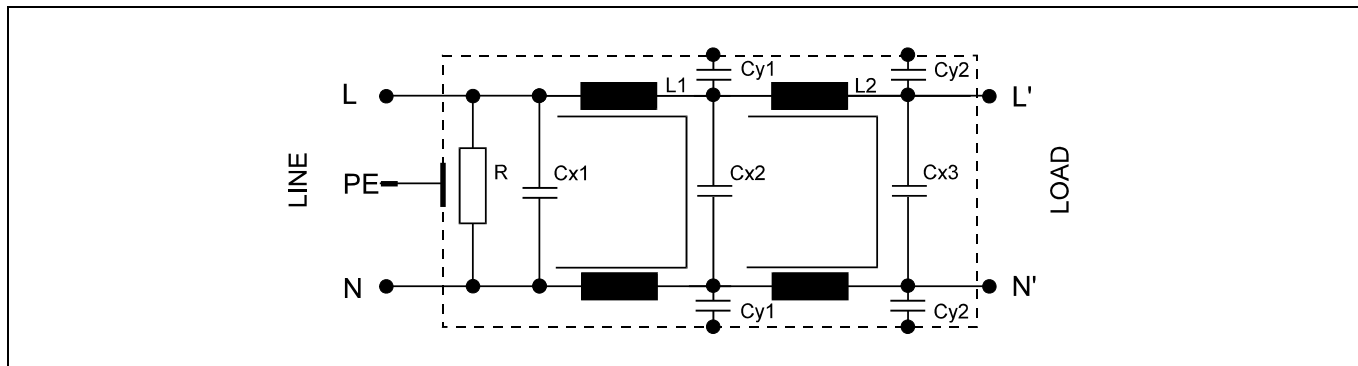
Controlled single phase drives with frequency inverter.

- **Packing machines**
- **Automatic production machines**
- **Cranes**
- **Pumping apparatus**



conforming to VDE 0565-3/ IEC 950/ UL 1283	Test voltage L-N 2100 V, DC 1 s    L/N-PE 2700 V, DC 1s
Overload 1.5 x rated current 1 min / h	Climatic rating DIN IEC 68 Teil 1 25/085/21

**Circuit example**



**Benefits:**

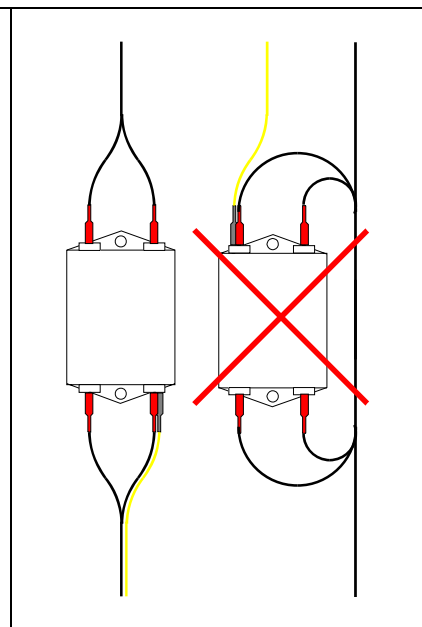
- |  |  |  |
|--|--|--|
| <ul style="list-style-type: none"> <li>• Compact design</li> <li>• Reduced weight</li> <li>• Easy installation</li> <li>• Reduced losses</li> <li>• Mechanical stress reduction</li> </ul> | <ul style="list-style-type: none"> <li>• Low heating</li> <li>• low noise</li> <li>• simple connection</li> <li>• Temperature reduction</li> <li>• Reduced harmonic distortions</li> </ul> | <ul style="list-style-type: none"> <li>• Improved power factor</li> <li>• Reduces tripping</li> <li>• Semiconductor life extended</li> <li>• CE Mark</li> <li>• UL Recognized</li> </ul> |
|--|--|--|

### Technical data

Type	Rated voltage [V]	Rated current [A]	Leakage current [mA]	$\Sigma C_x$	$\Sigma C_y$	$\Sigma L$	R
				[ $\mu F$ ]	[nF]	[mH]	[k $\Omega$ ]
CNW 102/3	250	3	<3.5	1	20	13.4	660
CNW 102/6		6	<3.5	1	20	7.8	660
CNW 102/10		10	<3.5	1	20	3.6	660
CNW 102/16		16	<3.5	1	20	2.4	660
CNW 102/20		20	<3.5	1	20	2.0	660

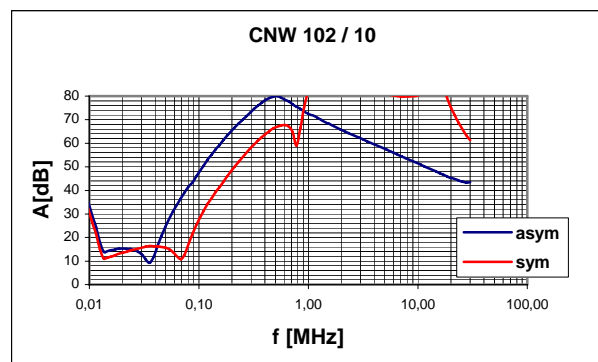
Frequency: 50/60 Hz

A single-phase, 250V, high performance filter suitable for most applications. Current ratings from 3A - 20A available. Provided with 6.3mm spade terminals and UL approved. Suitable for use in switch-mode power supplies for industrial applications, frequency drives and other types of electronic power supplies.



Example of Insertion loss

Other insertion losses on request

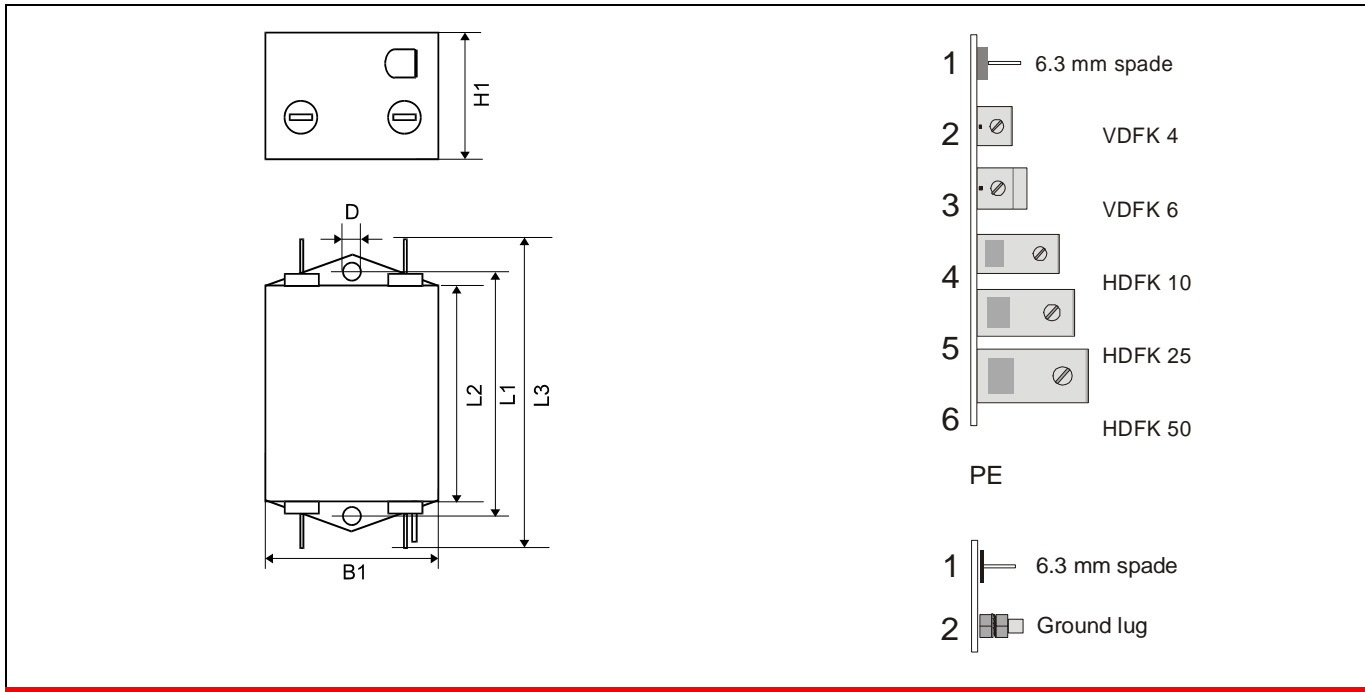


Per CISPR 17

Blue graph 50 $\Omega$ /50 $\Omega$  asym.

Red graph 50 $\Omega$ /50 $\Omega$  sym.

### Dimension Drawing



Type	Casing	Connection	PE-Connection	Dimensions					
				B1	D	H1	L1	L2	L3
				[mm]	[mm]	[mm]	[mm]	[mm]	[mm]
CNW 102/3	A	1	1	50	5	40	75	65	93
CNW 102/6	A	1	1	50	5	40	75	65	93
CNW 102/10	A	1	1	50	5	40	75	65	93
CNW 102/16	A	1	1	53	5	40	100	90	118
CNW 102/20	A	1	1	53	5	40	100	90	118