

**Three-phase mains filters (3 connections)
High Attenuation (3 A - 150 A)**

**Series CNW 100
Type CNW 103**

Applications:

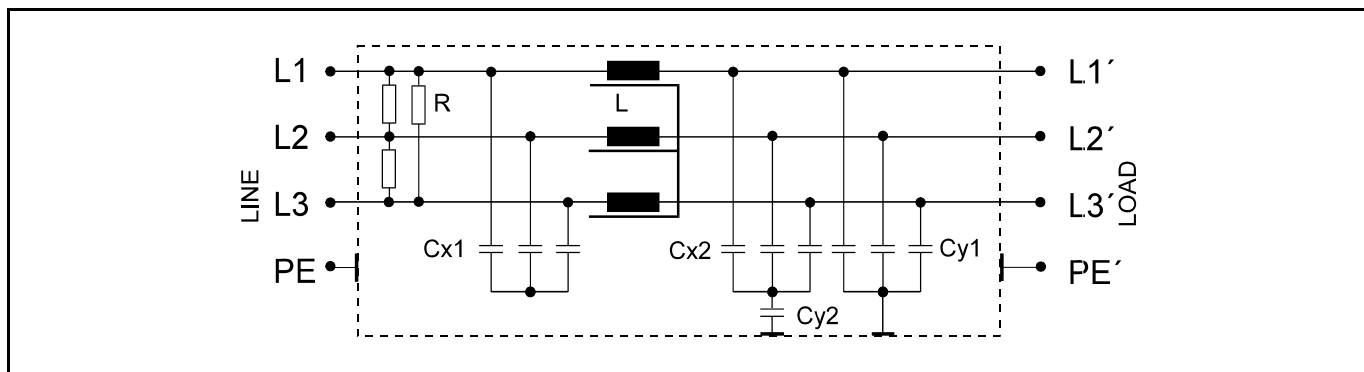
Controlled three phase drives with frequency inverter.

- **Packing machines**
- **Automatic production machines**
- **Cranes**
- **Pumping apparatus**



conforming VDE 0565-3/ IEC 950/ UL 1283	Test voltage L-L 2100 V, DC 1 s L-PE 2700 V, DC 1s
Overload 1.5 x rated current 1 min / h	Climatic rating DIN IEC 68 Teil 1 25/085/21

Circuit example



Benefits:

- | | | |
|--|--|--|
| <ul style="list-style-type: none"> • Compact design • Reduced weight • Easy installation • Reduced losses • Mechanical stress reduction | <ul style="list-style-type: none"> • Low heating • low noise • simple connection • Temperature reduction • Reduced harmonic distortions | <ul style="list-style-type: none"> • Improved power factor • Reduces tripping • Semiconductor life extended • CE Mark • UL Recognized |
|--|--|--|

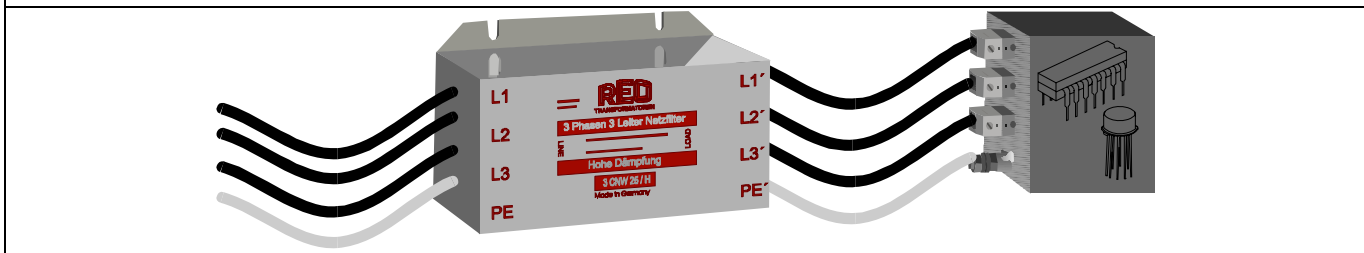
Technische Daten • Technical data • Données techniques

Type	Rated voltage [V]	Rated current [A]	Leakage current [mA]	ΣC_x [μF]	ΣC_y [nF]	L [mH]	R [k Ω]
CNW 103/3	3 x 440	3 x 3	<3.5	3	30	3	660
CNW 103/6		3 x 6	<3.5	3	30	2.2	660
CNW 103/10		3 x 10	<3.5	3	30	1.8	660
CNW 103/16		3 x 16	<7	6	40	1.5	660
CNW 103/25		3 x 25	<7	6	60	1.2	660
CNW 103/36		3 x 36	<7	9	60	0.8	660
CNW 103/50		3 x 50	<7	9	60	0.5	660
CNW 103/80		3 x 80	<16	12	88	0.39	660
CNW 103/120		3 x 120	<16	12	88	0.3	660
CNW 103/150		3 x 150	<16	12	88	0.1	660

Frequency: 50/60 Hz

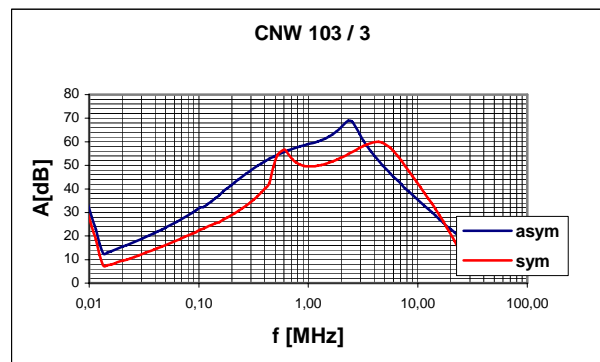
Special connections

For space and for assembly reasons it may be reasonable to use connections other than terminals, such as free leads. If the filter is always fitted in the same place, REO can build your filter with various connection types.



Example of Insertion loss

Other insertion losses on request

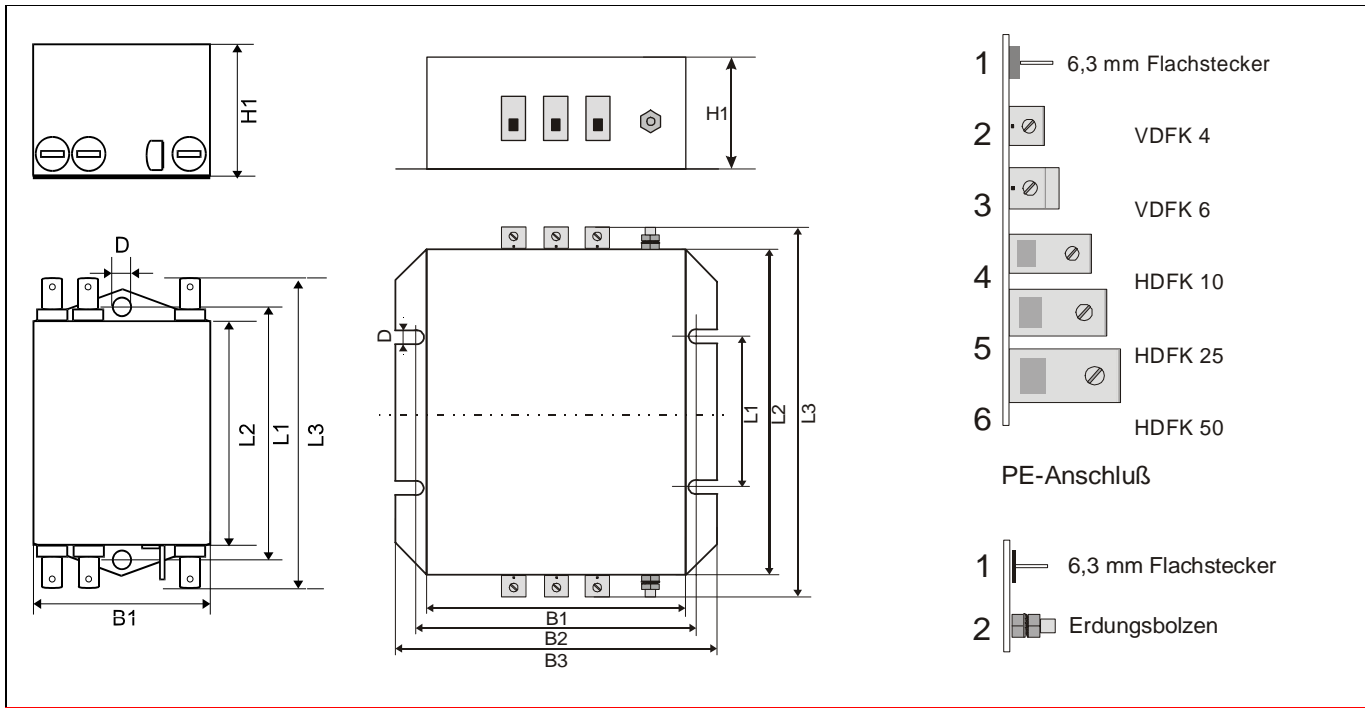


Per CISPR 17

Blue graph 50 Ω /50 Ω asym.

Red graph 50 Ω /50 Ω sym.

Dimension Drawing



Type	Casing	Connection	PE-Connection	Dimensions							
				B1	B2	B3	D	H1	L1	L2	L3
				[mm]	[mm]	[mm]	[mm]	[mm]	[mm]	[mm]	[mm]
CNW 103/3	A	1	1	53	---	---	5.0	40	100	90	118
CNW 103/6	A	1	1	53	---	---	5.0	40	100	90	118
CNW 103/10	A	1	1	53	---	---	5.0	40	100	90	118
CNW 103/16	B	1	2 (M5)	70	78	98	5.2	70	90	150	170
CNW 103/25	B	3	2 (M5)	70	78	98	5.2	70	90	150	170
CNW 103/36	B	4	2 (M5)	120	130	148	6.2	70	160	240	290
CNW 103/50	B	4	2 (M6)	120	130	148	6.2	70	160	240	290
CNW 103/80	B	5	2 (M8)	140	150	168	6.2	110	160	240	320
CNW 103/120	B	6	2 (M12)	140	150	168	6.2	110	160	240	320
CNW 103/150	B	6	2 (M12)	140	150	168	6.2	110	160	240	320