

Three-phase mains filters (3 connections) Very High Attenuation (3 A - 150 A)

Series CNW 100
Type CNW 104

Applications:

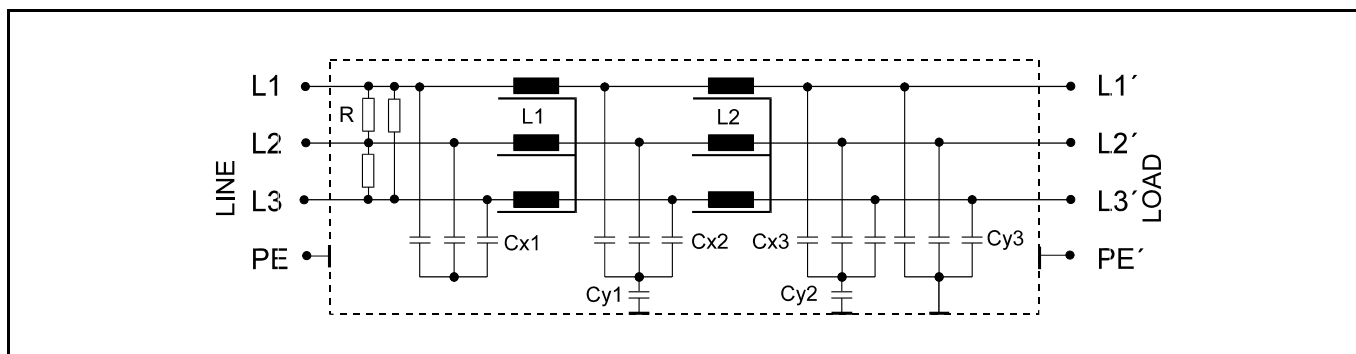
Controlled three phase drives with frequency inverter.

- Packing machines
- Automatic production machines
- Cranes
- Pumping apparatus



conforming to VDE 0656-3/ IEC 950/ UL 1283	Test voltage L-L 2100 V, DC 1 s L-PE 2700 V, DC 1s
Overload 1.5 x rated current 1 min / h	Climatic rating DIN IEC 68 Teil 1 25/085/21

Circuit example



Benefits:

- Compact design
- Reduced weight
- Easy installation
- Reduced losses
- Mechanical stress reduction
- Low heating
- low noise
- simple connection
- Temperature reduction
- Reduced harmonic distortions
- Improved power factor
- Reduces tripping
- Semiconductor life extended
- CE Mark
- UL Recognized

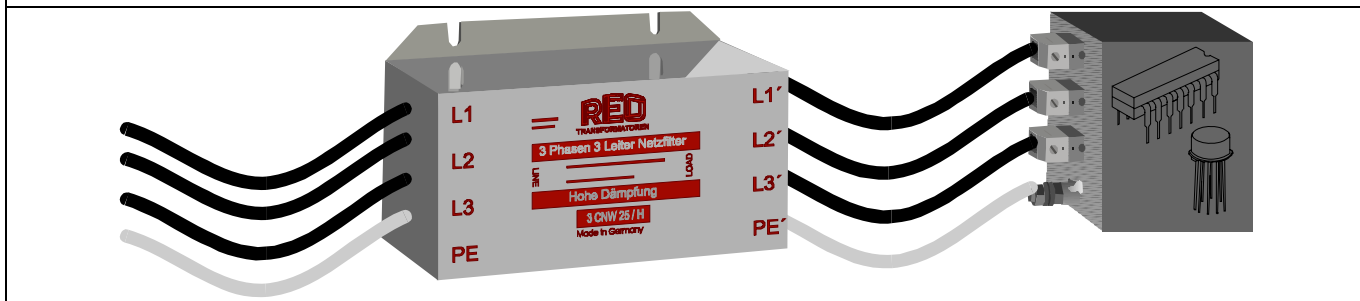
Technical data

Type	Rated voltage [V]	Rated current [A]	Leakage current [mA]	ΣCx [μF]	ΣCy [nF]	L [mH]	R [k Ω]
CNW 104/3	3 x 440	3 x 3	<100	7.5	1000	6.0	660
CNW 104/6		3 x 6	<100	7.5	1000	4.4	660
CNW 104/10		3 x 10	<100	7.5	1000	3.6	660
CNW 104/16		3 x 16	<100	9	1000	3.0	660
CNW 104/25		3 x 25	<100	9	1000	2.2	660
CNW 104/36		3 x 36	<100	18	1000	1.5	660
CNW 104/50		3 x 50	<100	18	1000	1.0	660
CNW 104/80		3 x 80	<100	21	1000	0.8	660
CNW 104/120		3 x 120	<100	21	1000	0.5	660
CNW 104/150		3 x 150	<100	21	1000	0.25	660

Frequency: 50/60 Hz

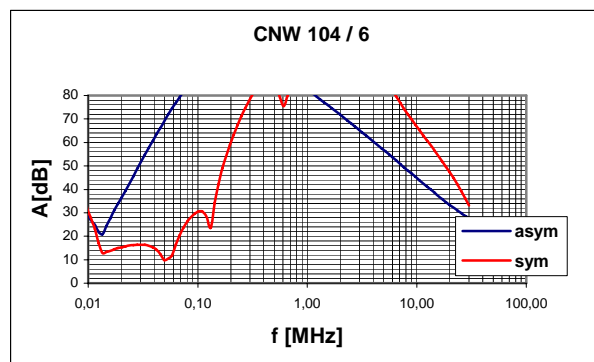
Special connections

For space and for assembly reasons it may be reasonable to use connections other than terminals, such as free leads. If the filter is always fitted in the same place, REO can build your filter with various connection types.



Example of Insertion loss

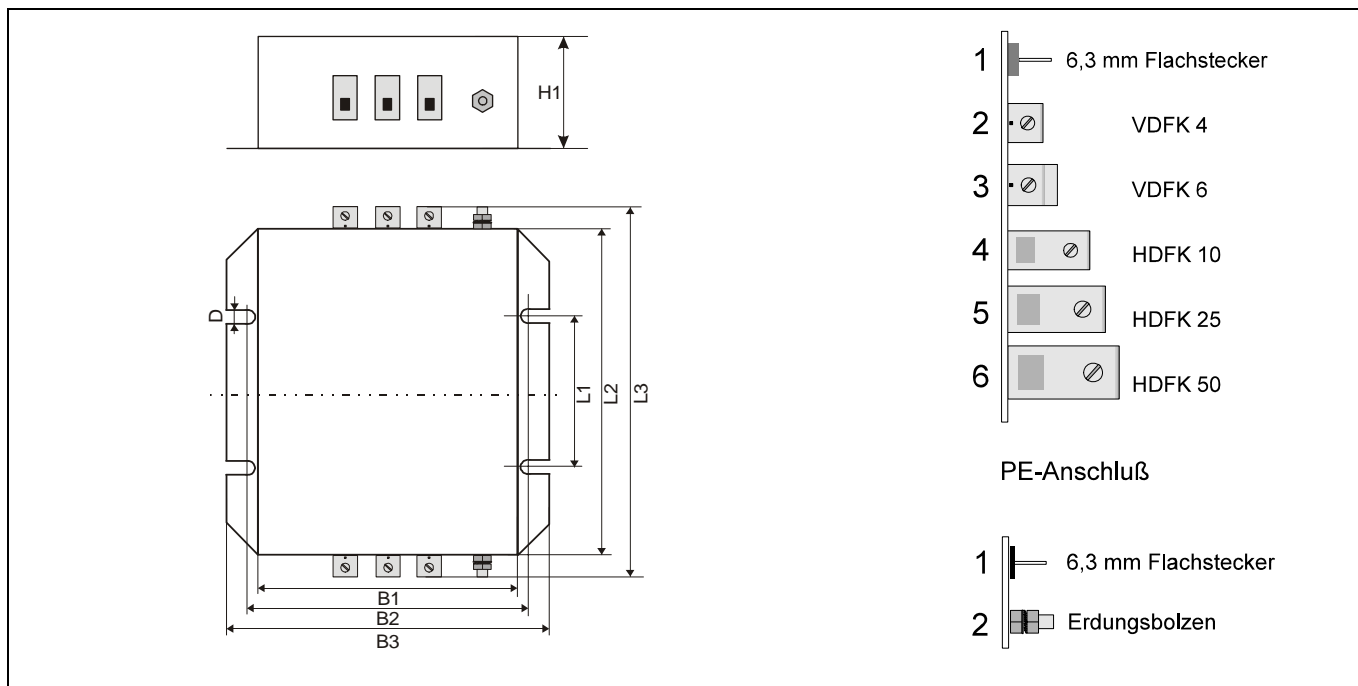
Other insertion losses on request



Per CISPR 17

Blue graph 50 Ω /50 Ω asym. Red graph 50 Ω /50 Ω sym.

Dimension Drawing



Type	Connection	PE-Connection	Dimensions							
			B1 [mm]	B2 [mm]	B3 [mm]	D [mm]	H1 [mm]	L1 [mm]	L2 [mm]	L3 [mm]
CNW 104/3	1	2 (M5)	70	78	98	5.2	70	90	150	170
CNW 104/6	1	2 (M5)	70	78	98	5.2	70	90	150	170
CNW 104/10	1	2 (M5)	70	78	98	5.2	70	90	150	170
CNW 104/16	1	2 (M5)	70	78	98	5.2	70	90	150	170
CNW 104/25	3	2 (M5)	70	78	98	5.2	70	90	150	170
CNW 104/36	4	2 (M6)	140	150	168	6.2	110	160	240	290
CNW 104/50	5	2 (M6)	140	150	168	6.2	110	160	240	290
CNW 104/80	5	2 (M8)	140	150	168	6.2	140	200	270	350
CNW 104/120	6	2 (M12)	140	150	168	6.2	140	200	270	350
CNW 104/150	6	2 (M12)	140	150	168	6.2	140	200	270	350