

**Single-phase EMC filters (2 connections) with  
Very High Attenuation  
Book style (7 A - 180 A)**

**Series CNW 200  
Type CNW 202/...**

**Applications:**

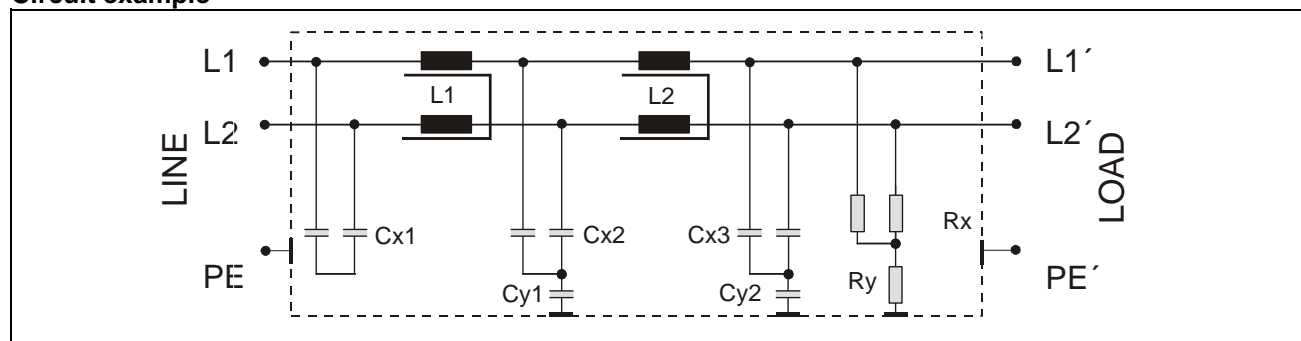
Controlled single phase drives with frequency inverter.

- Packing machines
- Automatic production machines
- Cranes
- Pumping apparatus



Conforming to VDE 0565-3/ IEC 950/ UL 1283	Test voltage L-L 2100 V, DC 1 s    L-PE 2700 V, DC 1s
Overload 1.5 x rated current 1 min / h	Climatic rating DIN IEC 68 Teil 1 25/085/21

**Circuit example**



**Benefits:**

- |  |  |   |
|--|--|---|
| <ul style="list-style-type: none"> <li>• Compact design</li> <li>• Reduced weight</li> <li>• Easy installation</li> <li>• Reduced losses</li> <li>• Mechanical stress reduction</li> </ul> | <ul style="list-style-type: none"> <li>• Low heating</li> <li>• low noise</li> <li>• simple connection</li> <li>• Temperature reduction</li> <li>• Reduced harmonic distortions</li> </ul> | <ul style="list-style-type: none"> <li>• Improved power factor</li> <li>• Reduces tripping</li> <li>• Semiconductor life extended</li> <li>• CE Mark</li> </ul> |
|--|--|---|

### Technical data

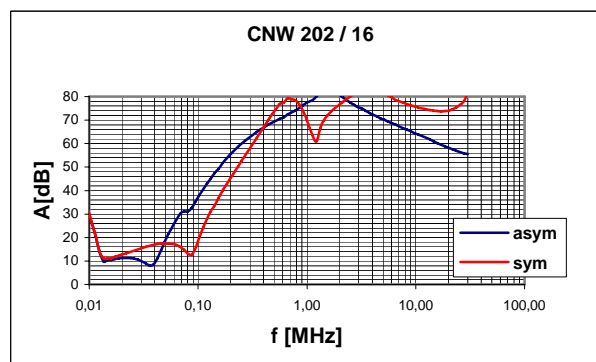
Type	Rated voltage [V]	Rated current [A] 45°C	Leakage current [mA]	$\Sigma L$ [mH]	$\Sigma Cx$ [ $\mu F$ ]	$\Sigma Cy$ [ $\mu F$ ]	Rx [k]	Ry [k]
CNW 202/7	270/480	7	<30	4.6	4	2	470	330
CNW 202/16		16	<30	3.2	5	2	470	330
CNW 202/30		30	<30	1.9	6	2	470	330
CNW 202/42		42	<30	1.6	6	2	470	330
CNW 202/55		55	<30	1.05	6	2	470	330
CNW 202/75		75	<30	0.9	6	2	470	330
CNW 202/100		100	<30	0.8	6	2	470	330
CNW 202/130		130	<35	0.6	8	2	470	330
CNW 202/180		180	<35	0.13	8	2	470	330

Frequency: 50/60 Hz

By using the REO-Type CNW 202 1-phase-filters, noise levels are reduced to within the European Standard limits specified in EN 50081-2. In installations conforming to EMC standards it is even possible to meet the more stringent limits required for residential use.

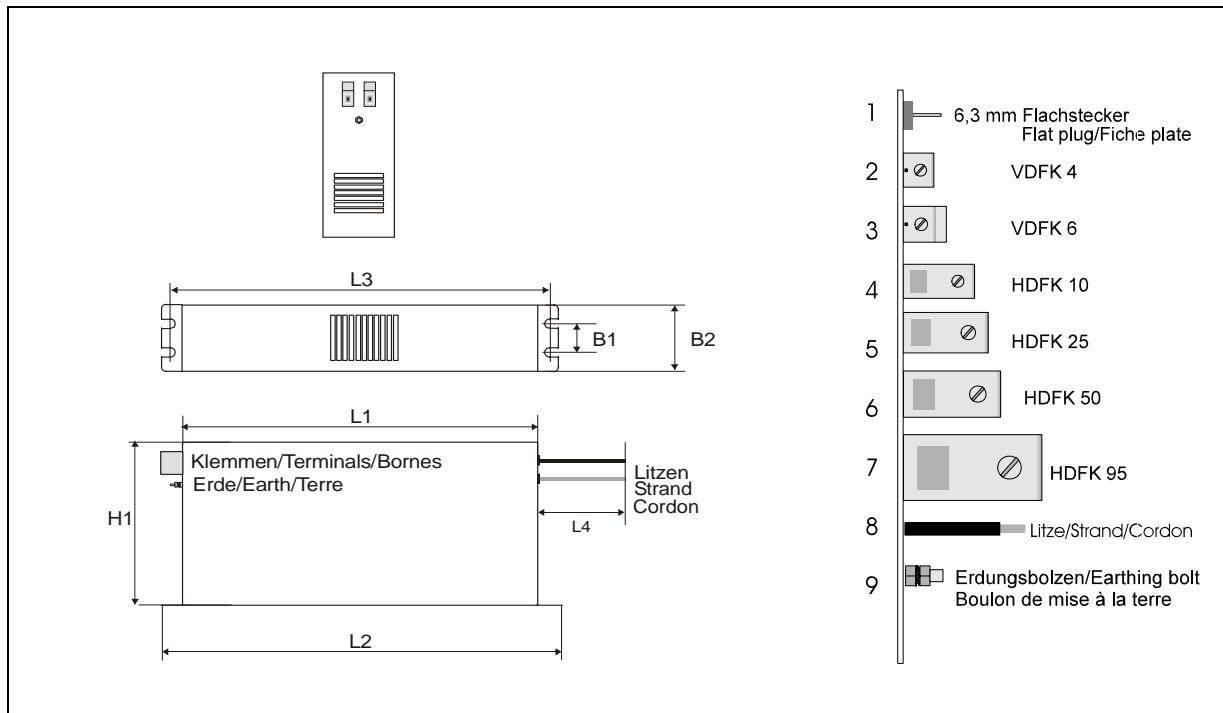
-1 Residential area  
-2 Industrial area

**Example Insertion loss**  
Other insertion losses on request



Per CISPR 17  
Blue graph 50Ω/50Ω asym. Red graph 50Ω/50Ω sym.

## Dimension Drawing



Type	Dimensions							Connections		
	L1 [mm]	L2 [mm]	L3 [mm]	L4 [mm]	B1 [mm]	B2 [mm]	H1 [mm]	Input	Output optional	
CNW 202/7	225	255	240	300	25	50	126	2	8 (1.5 mm <sup>2</sup> )	2
CNW 202/16	275	305	290	300	30	55	142	2	8 (1.5 mm <sup>2</sup> )	2
CNW 202/30	305	335	320	400	35	60	150	3	8 (4 mm <sup>2</sup> )	3
CNW 202/42	300	330	314	500	45	70	185	4	8 (10 mm <sup>2</sup> )	4
CNW 202/55	300	330	314	500	55	80	185	5	8 (16 mm <sup>2</sup> )	5
CNW 202/75	300	330	314	---	55	80	220	5	---	5
CNW 202/100	350	380	364	---	65	90	220	6	---	6
CNW 202/130	400	440	414	---	80	110	240	6	---	6
CNW 202/180	400	440	413	---	80	110	240	7	---	7