

Single-phase EMC Filters (2 connections)

High Attenuation (8A - 30A)

Series CNW 540
Type CNW 546/..

Applications:

Single phase drives with frequency inverter.

- Packing machines
- Computer controls
- Automatic production machines
- Radio controls
- Cranes
- Pumping apparatus
- Laboratory equipment
- Wind power and solar energy plants



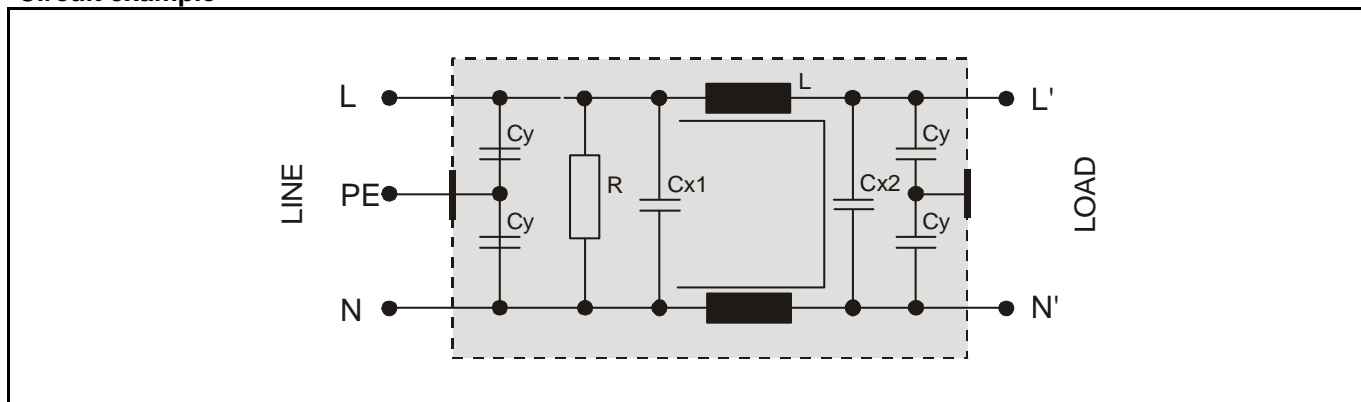
Construction A



Construction B

conforming to VDE 0565-3/ IEC 950/ UL 1283	Test voltage L-N 2100 V, DC 1 s L/N-PE 2700 V, DC 1s
Overload 1,5 x rated current 1 min / h	Climatic rating DIN IEC 60068-1

Circuit example



Benefits:

- | | | |
|--|--|---|
| <ul style="list-style-type: none"> • Compact design • Reduced weight • Easy installation • Reduced losses • Mechanical stress reduction | <ul style="list-style-type: none"> • Low heating • low noise • simple connection • Temperature reduction • Reduced harmonic distortions | <ul style="list-style-type: none"> • Improved power factor • Reduces tripping • Semiconductor life extended • CE Mark |
|--|--|---|

Technical data

Type	Rated voltage [V]	Rated current [A]	Leakage current [mA]	ΣC_x [μF]	ΣC_y [nF]	L [mH]	R [k Ω]
CNW 546/8	250	8	<3.5	3	60	1.0	680
CNW 546/10		10	<3.5	3	60	7.5	680
CNW 546/16		16	<3.5	3	60	4.5	680
CNW 546/20		20	<3.5	3	60	3.2	680
CNW 546/30		30	<3.5	3	20	1.3	680

Frequency: 50/60 Hz

The use of electrical and electronic equipment is increasing and more installations of energy, control and computer technology are placed closely to each other.

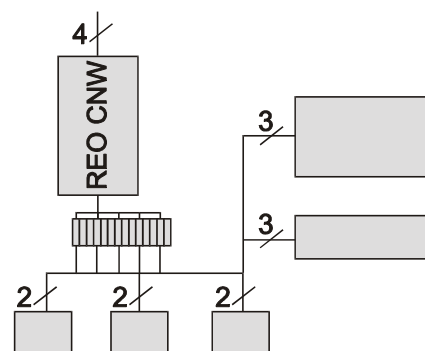
These can influence each other when being in operation. In order to suppress these disturbances EMC filters with the relevant values are required.

REO EMC Mains filters are suitable for both, single and general suppression. As long as the rated current of the single phases does not exceed the admissible level in case of general suppression, it is possible to suppress as many apparatus as possible.

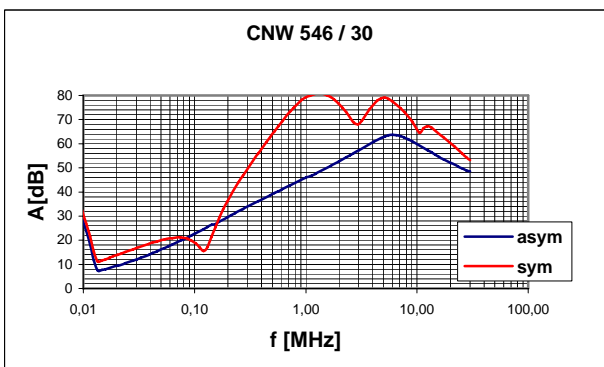
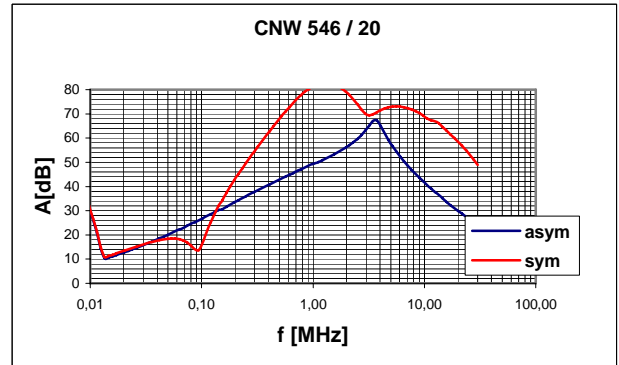
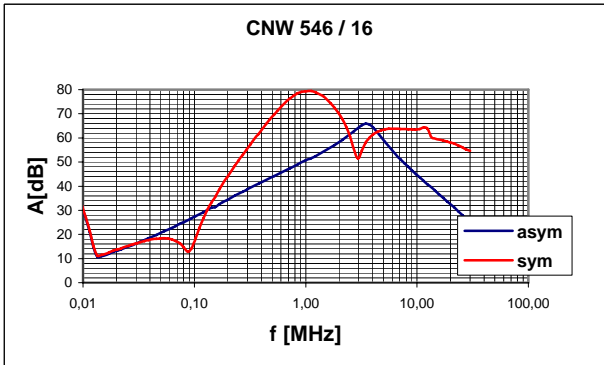
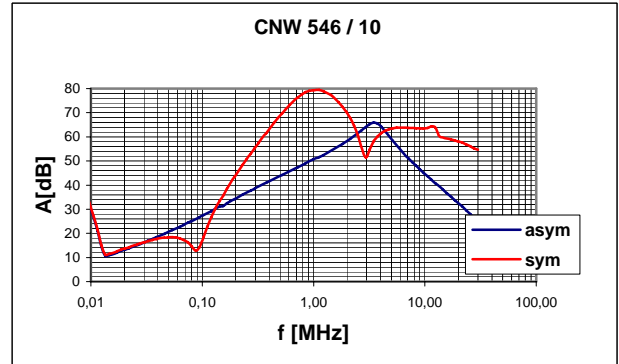
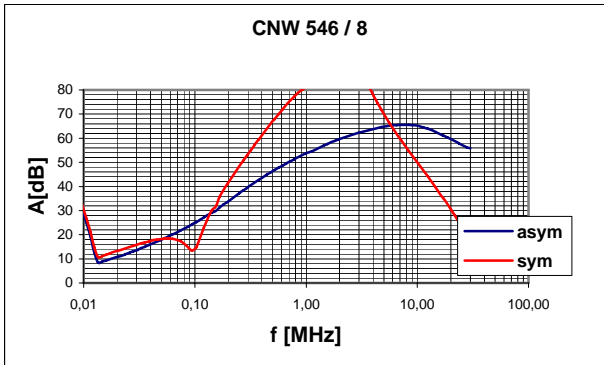
Single suppression



General suppression



Typical attenuation

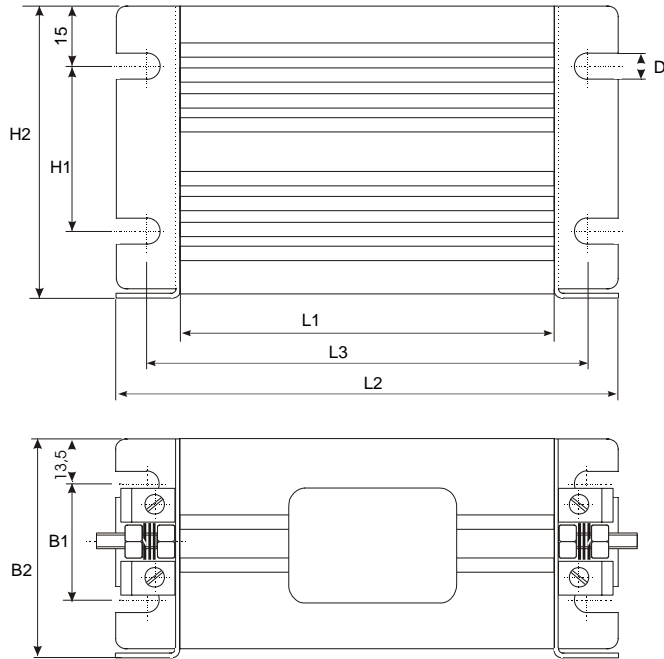


Per CISPR 17

Blue graph 50Ω/50Ω asym. Red graph 50Ω/50Ω sym.

Dimension Drawing

Construction A



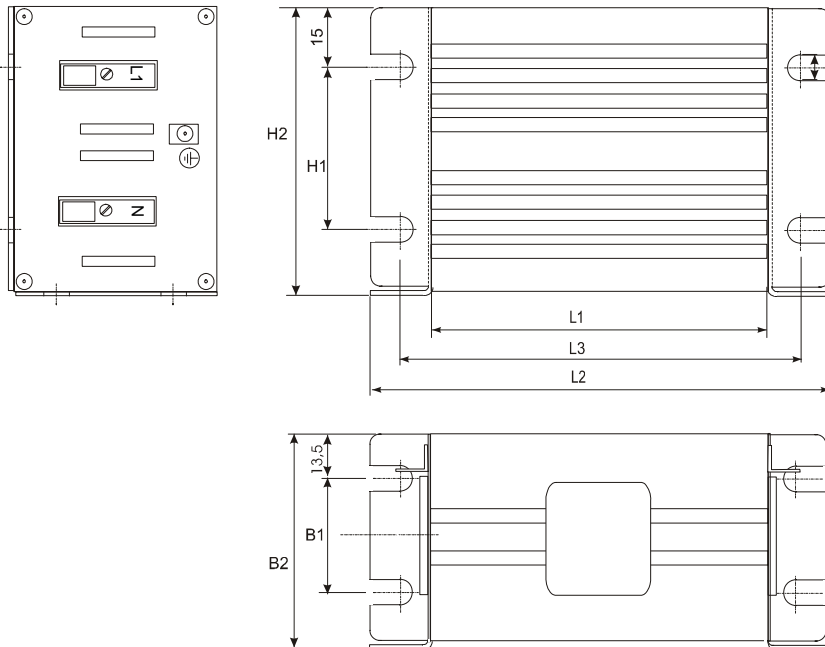
Connection

- 1 6,3 mm Flachstecker/
Spade connector/
cosse
- 2 VDFK 4
- 3 VDFK 6
- 4 HDFK 10
- 5 HDFK 25
- 6 HDFK 50

PE-Anschluß/PE-Connection/PE-Connexion

- 1 6,3 mm Flachstecker/
Spade connector/
cosse
- 2 Erdungsbolzen/
Earthing bolt/
Boulon de mise à la terre

Construction B



Connection

- 1 Front 2,5H
- 2 Front 4H
- 3 Front 6H

PE-Anschluß/PE-Connection/PE-Connexion

- 1 6,3 mm Flachstecker/
Spade connector/
cosse
- 2 Erdungsbolzen/
Earthing bolt/
Boulon de mise à la terre

Type	Dimensions								Connection	PE-Connection
Construction A	L1	L2	L3	B1	B2	H1	H2	D		
	[mm]	[mm]	[mm]	[mm]	[mm]	[mm]	[mm]	[mm]		
CNW 546/8	98	130	113	25	54	50	81	7	2	2 (M5)
CNW 546/10									2	2 (M5)
CNW 546/16									2	2 (M5)
CNW 546/20									3	2 (M5)
CNW 546/30									3	2 (M5)
Construction B										
CNW 546/8	158	190	173	25	54	50	81	7	1	2 (M5)
CNW 546/10									1	2 (M5)
CNW 546/16									2	2 (M5)
CNW 546/20									3	2 (M5)
CNW 546/30									3	2 (M5)